



Stazione  
Zoologica  
Anton Dohrn  
Napoli



Sustainable Blue  
Economy Partnership

# INFO DAY HORIZON EUROPE EUROPEAN PARTNERSHIPS

## Bando 2024 nel partenariato co-funded Sustainable Blue Economy Partnership (SBEP), Cluster 6

**5 FEBBRAIO** | in presenza & on line

 Napoli - Stazione Zoologica Anton Dohrn, Sala Conferenze



#EUPartnerships #HorizonEU

EUROPEAN PARTNERSHIP

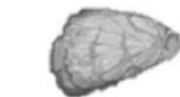
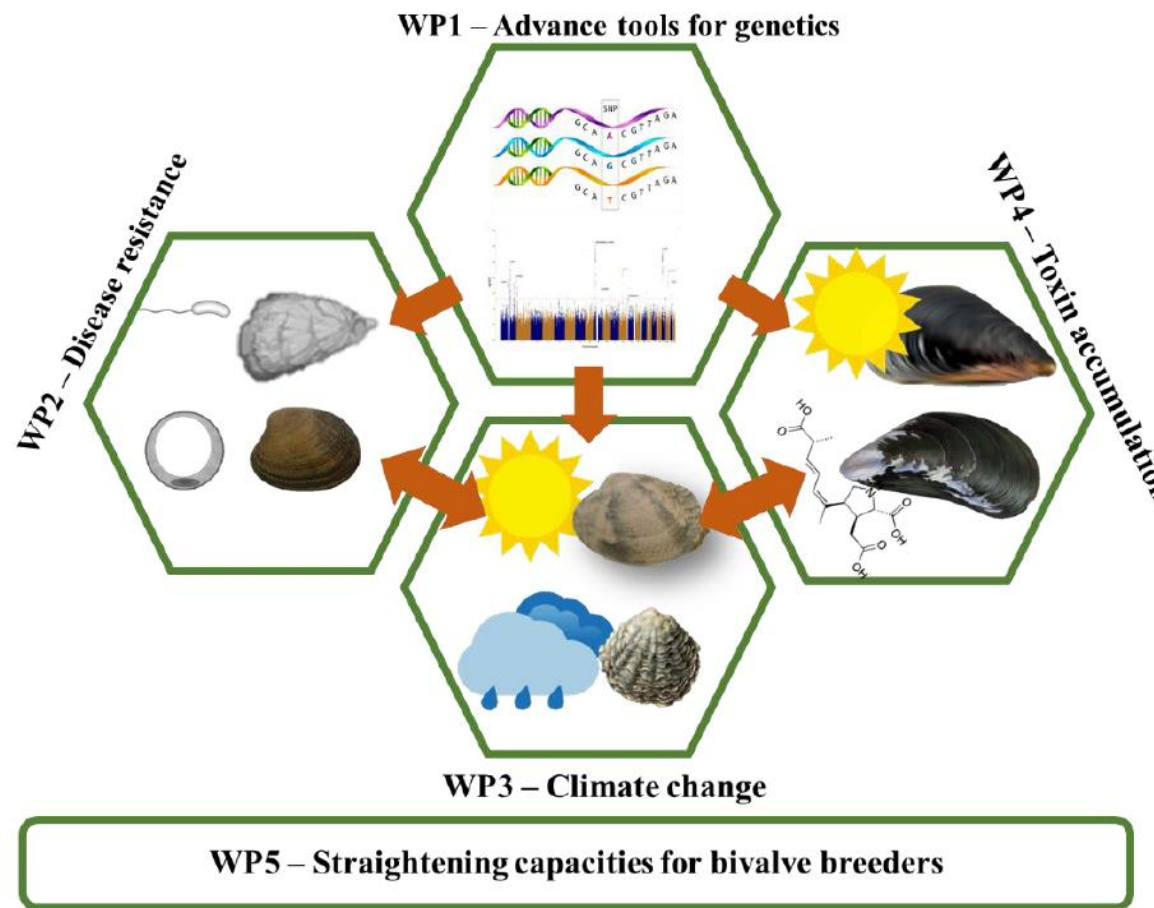


Co-funded by  
the European Union

## Bando 2024 nel partenariato co-funded SBEP, Cluster 6

# ShellfishBoost

The long-term goal of ShellFishBoost is to **mitigate** the effects of **climate change** on the **bivalve production** using **genetic selection** and **co-creating best practices** for selective breeding with industrial project partners of ShellFishBoost and other **key stakeholders** (producer associations and other bivalve hatcheries)



*Crassostrea gigas*



*Ruditapes philippinarum*



*Ruditapes decussatus*



*Ostrea edulis*



*Mytilus galloprovincialis*



*Mytilus edulis*

## Bando 2024 nel partenariato co-funded SBEP, Cluster 6

ShellFshBoost consortium			
Participant number	Logo	Partner organization name	Country
1- UNIPD (coordinator)		University of Padova	Italy
2- SYSAAF		French Poultry and Aquaculture Breeders Technical Center	France
3- NOFIMA		NOFIMA As	Norway
4- CIIMAR		Interdisciplinary Centre of Marine and Environmental Sciences	Portugal
5- USC		University of Santiago de Compostela	Spain
6- IMC		International Marine Centre	Italy
7- INRAE		National Research Institute for Agriculture, Food and the Environment	France
8- MVE		Marinove	France
9- VN		Vendée Naissain	France
10- AQUAGOMA		Aquagoma - Produtos do Rio e Mar Lda	Portugal

- Already existing scientific network on aquaculture genetics
- Strong links with the industrial sector
- Climate change already perceived as a challenge by the industry

- “Strong alignment with the thematic priorities of the present call and ... the strategy for the sustainable growth of EU aquaculture”
- Genetic selection for “resilience to climate-related challenges is particularly innovative”
- “Methodology is sound. Particularly impressed with the commercial/ academic partnerships and the concept of the co-creation groups...”
- “Risks are properly identified and a contingency plan is given”
- “project has been co-designed together with key stakeholders ... maximization of impact”
- “Co-creation groups for defining best practices... also allow feedback”
- “The economic and societal impact is not only taken into account but additionally calculated in numeric terms. Stakeholders (specified) will be contacted”
- “interconnection to other national and transnational projects ... demonstrates how the project will build on previous research and avoid duplication”
- “The partners experience and expertise provide confidence that they will fully fulfil their roles”

## Bando 2024 nel partenariato co-funded SBEP, Cluster 6

# Grazie per l'attenzione!

Luca Bargelloni

Dipartimento di Biomedicina Comparata e Alimentazione

Scuola di Agraria e Medicina Veterinaria

Università di Padova

[luca.bargelloni@unipd.it](mailto:luca.bargelloni@unipd.it)